

How install the driver in Windows 8

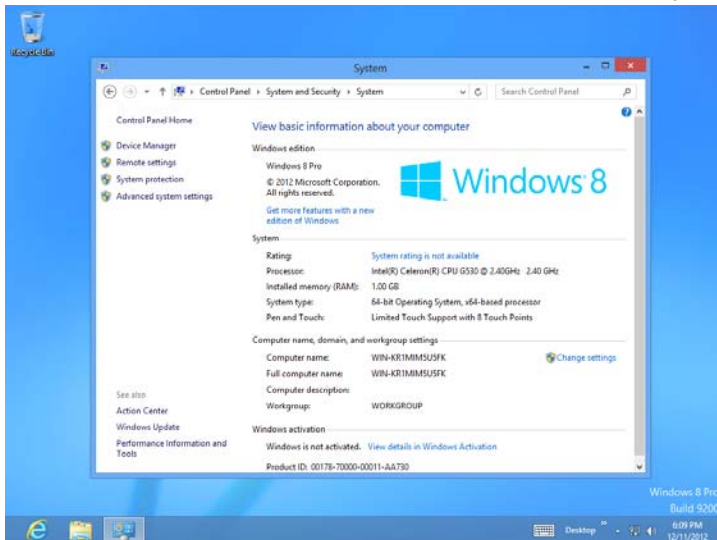
1. Instruction in text

Start Windows 8, and follow the below steps,

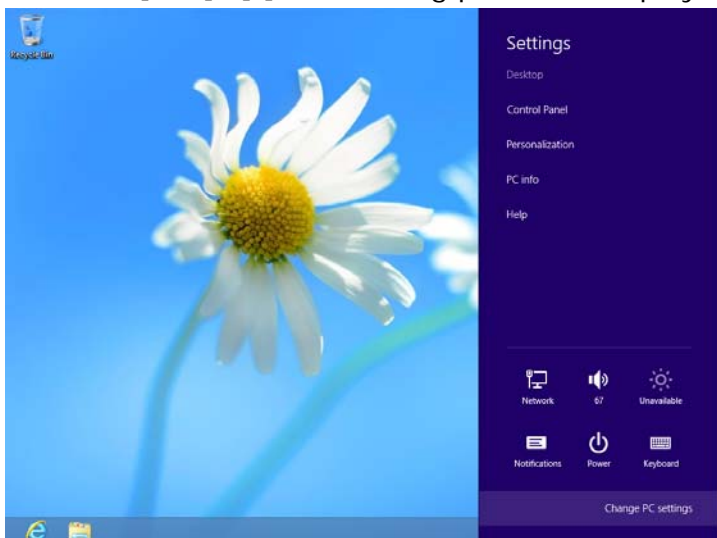
1. Press [Win]+[I], the setting panel will display
2. Click "Change PC settings"
3. Click "General"
4. Go to "Advanced startup" and click "Restart now"
5. Click "Troubleshoot"
6. Click "Advanced options"
7. Click "Startup Settings"
8. Click "Restart"
9. The PC will restart, and press functions key "F7" or numbers key "7" to choose "Disable driver signature enforcement"
10. Install the driver accordingly

2. Detailed steps with screenshots:

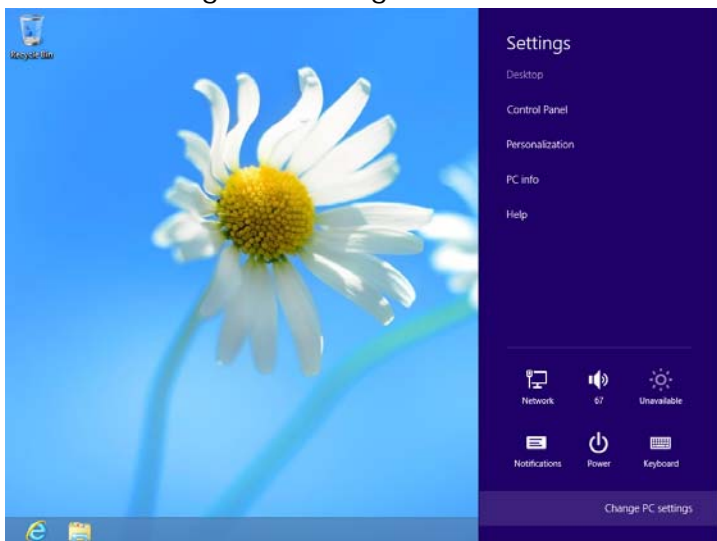
1. Start Windows 8, and follow the below steps



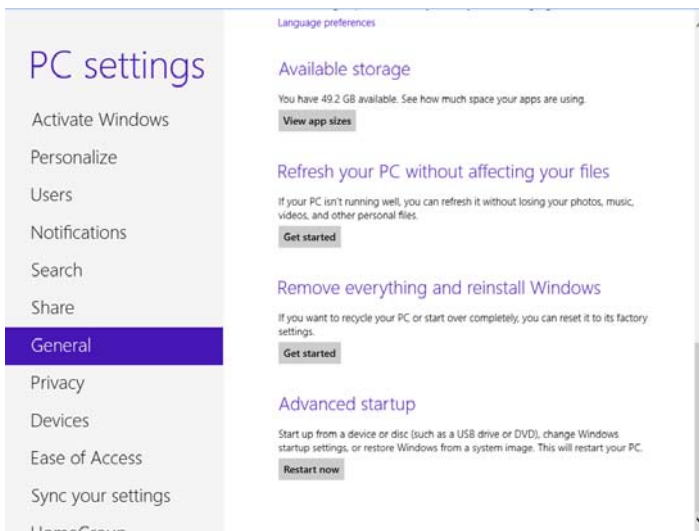
2. Press [Win]+[I], the setting panel will display



3. Click "Change PC settings"



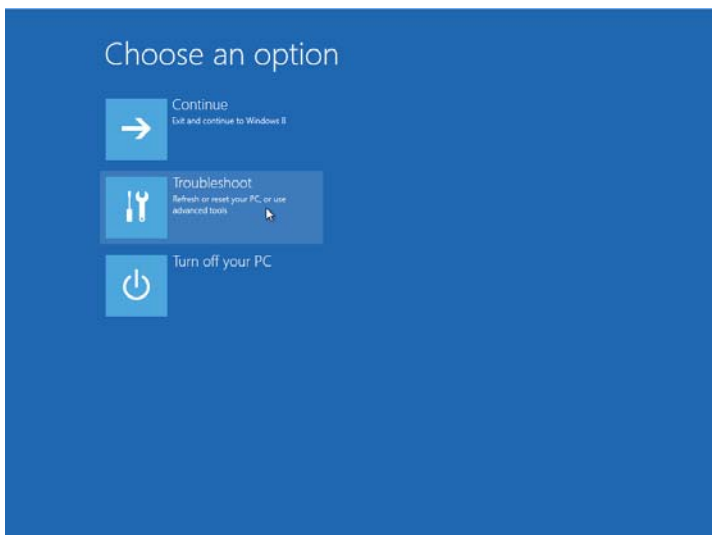
4. Click "General". Go to "Advanced startup" and click "Restart now"



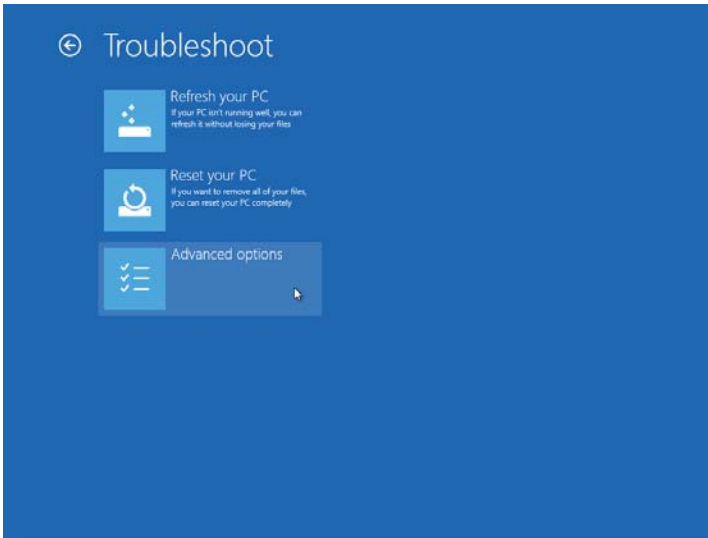
5. PC is restarting.



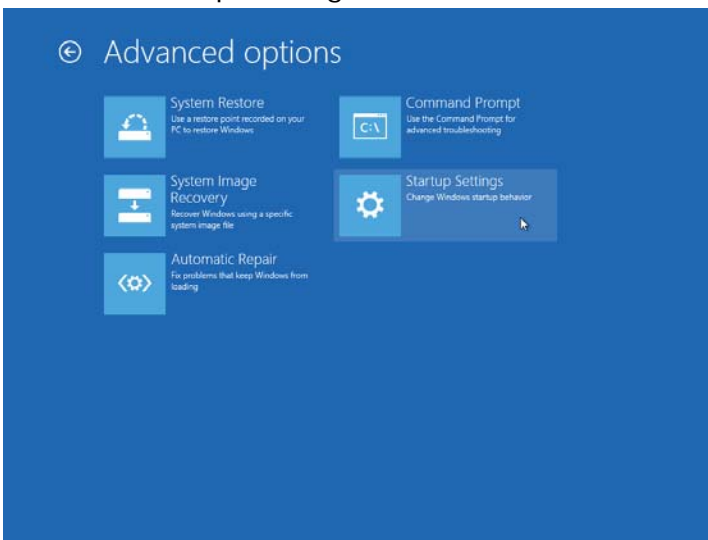
6. Click "Troubleshoot"



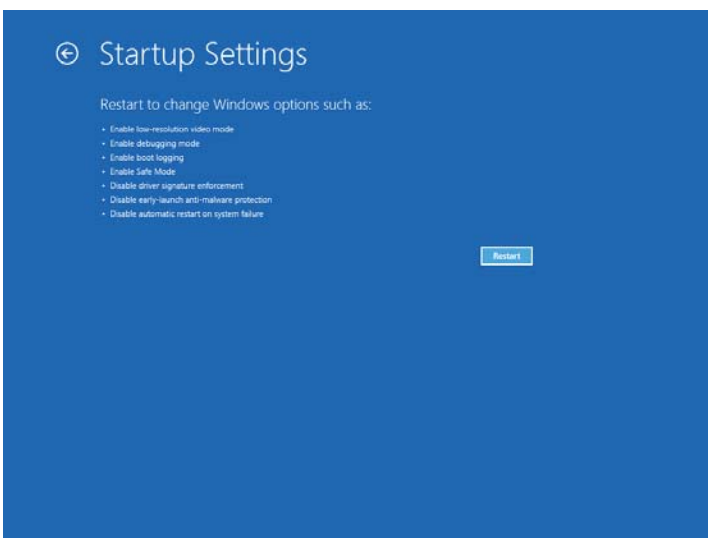
7. Click "Advanced options"



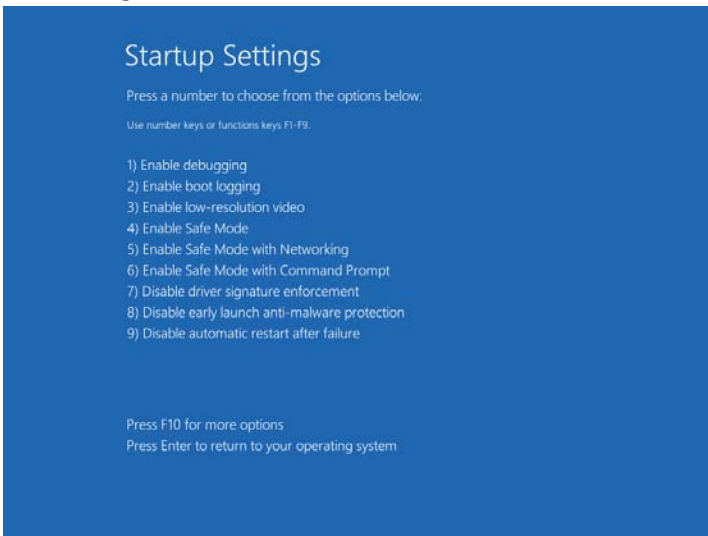
8. Click "Startup Settings"



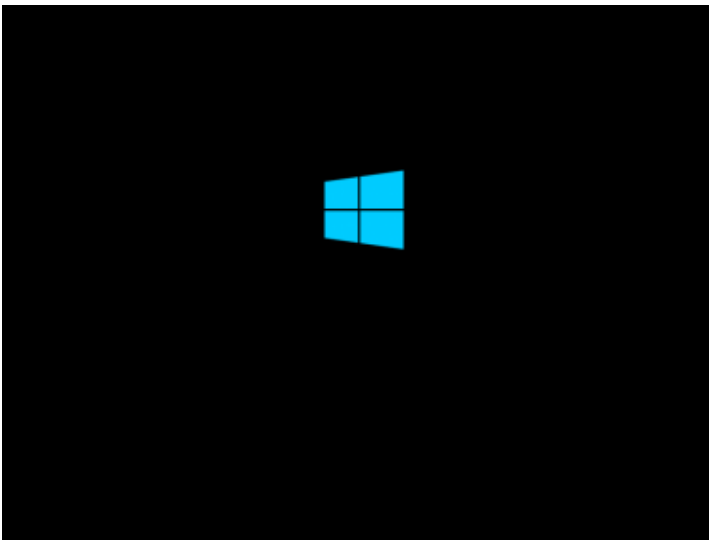
9. Click "Restart"



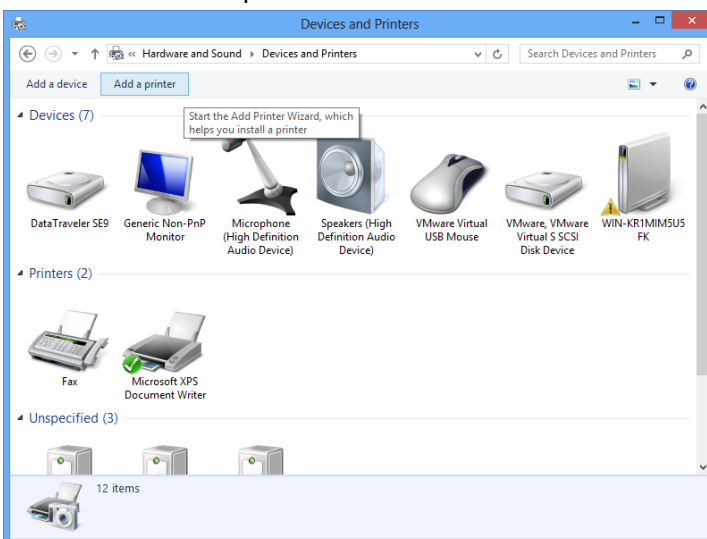
10. The PC will restart, and press functions key "F7" or numbers key "7" to choose "Disable driver signature enforcement"



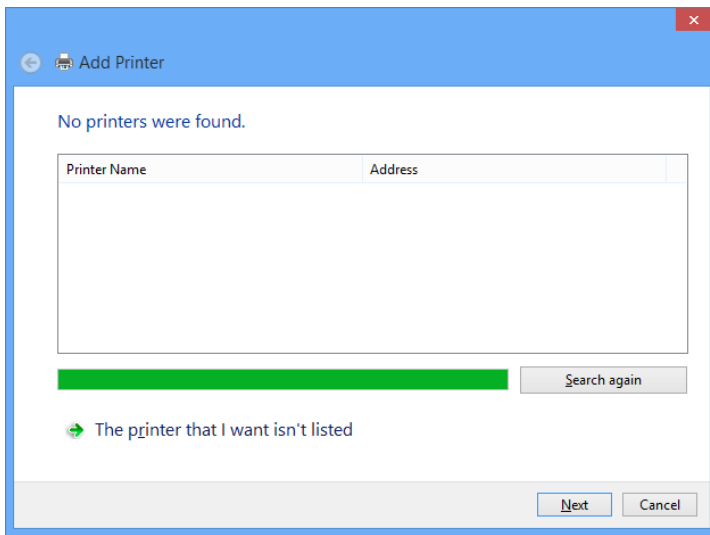
11. Returning to Windows 8



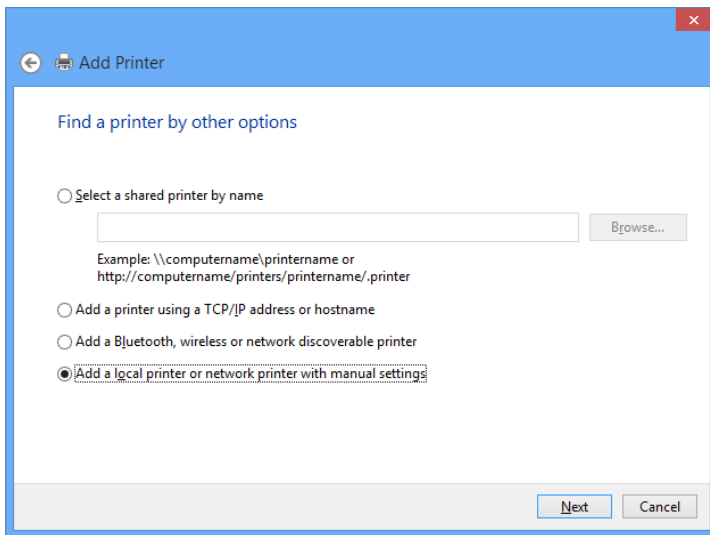
12. Click "Add a printer" in Devices and Printers



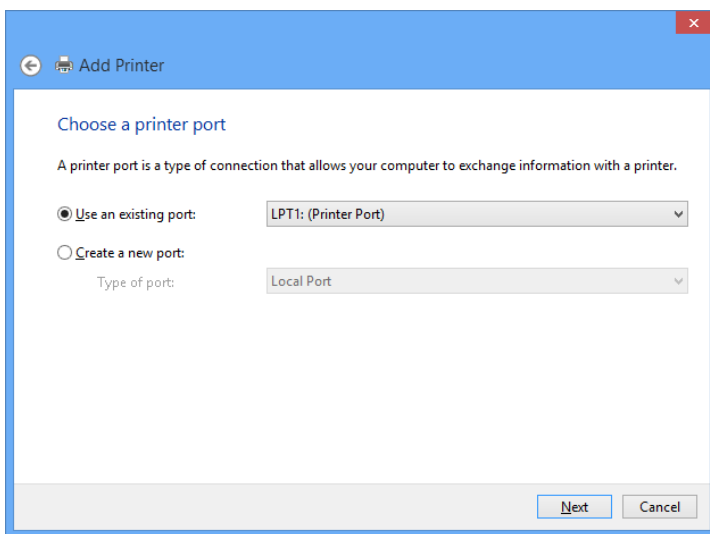
13. Click "Next" to continue



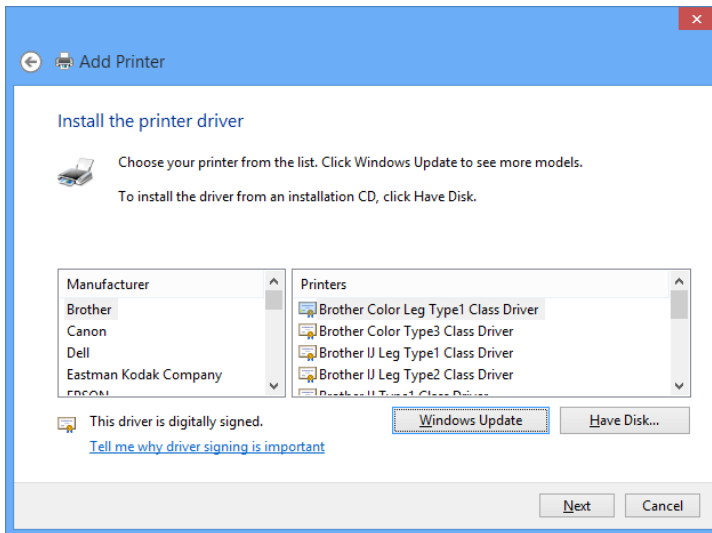
14. Choose "Add a local printer or network printer with manual settings"



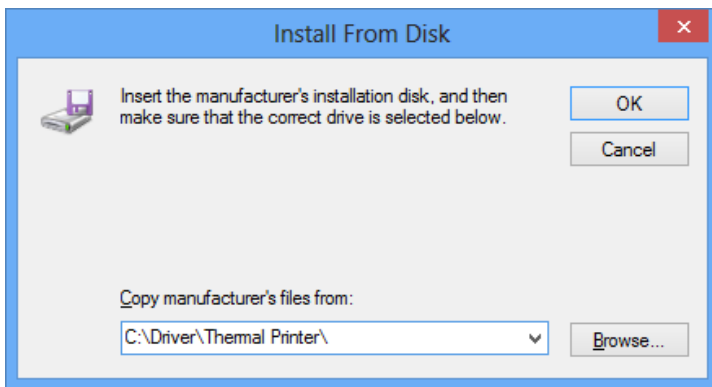
15. Choose the correct port used for the printer connection



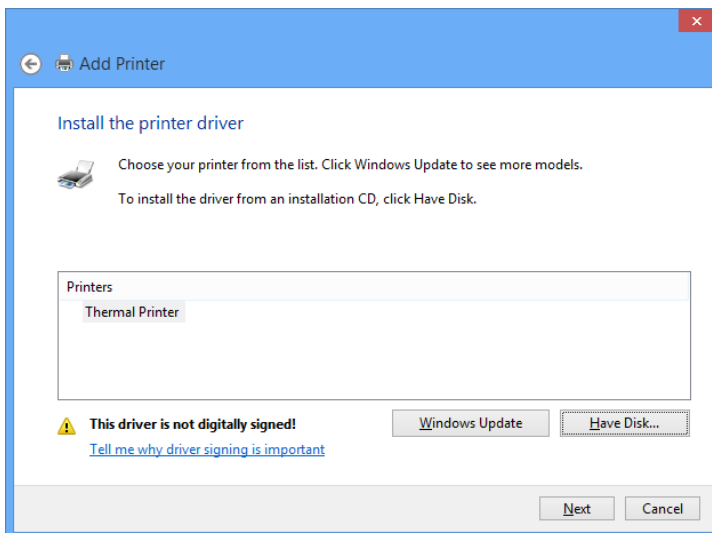
16. Click "Have Disk" to select the driver installation file for printer



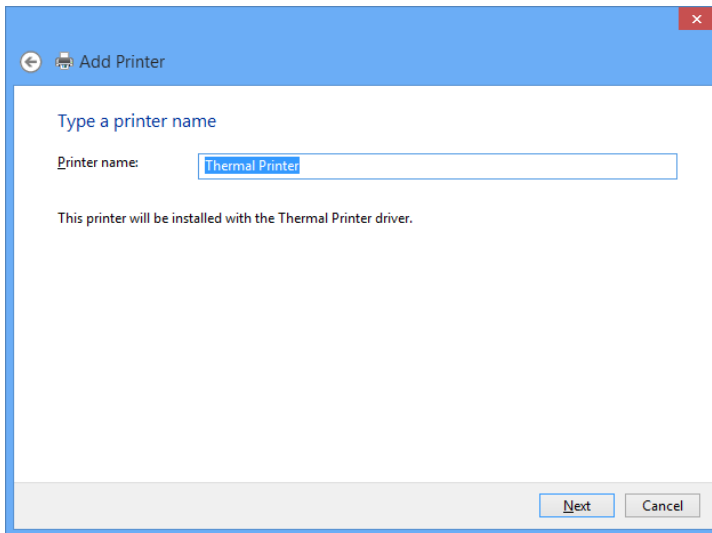
17. Click OK to continue



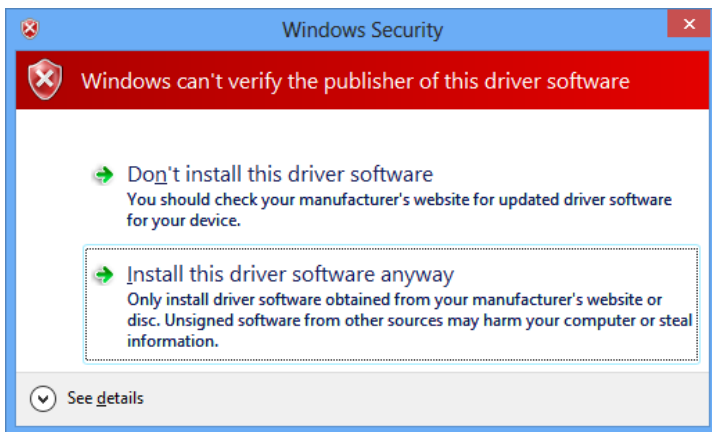
18. Click Next to continue



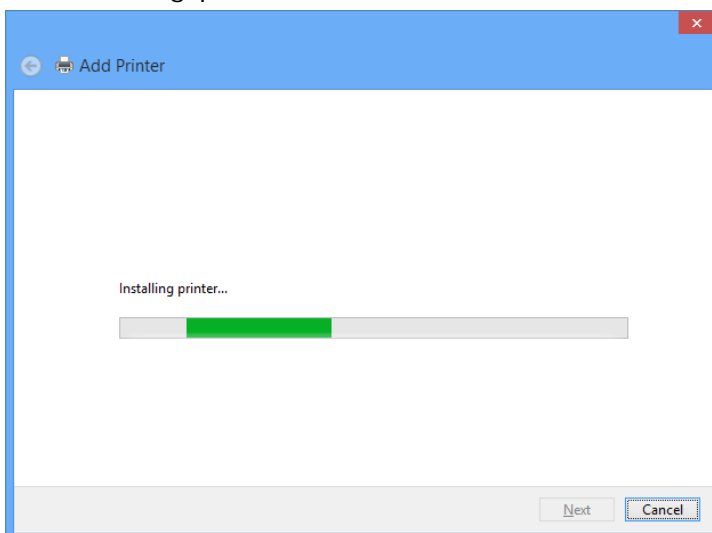
19. Type a printer name and click Next to continue



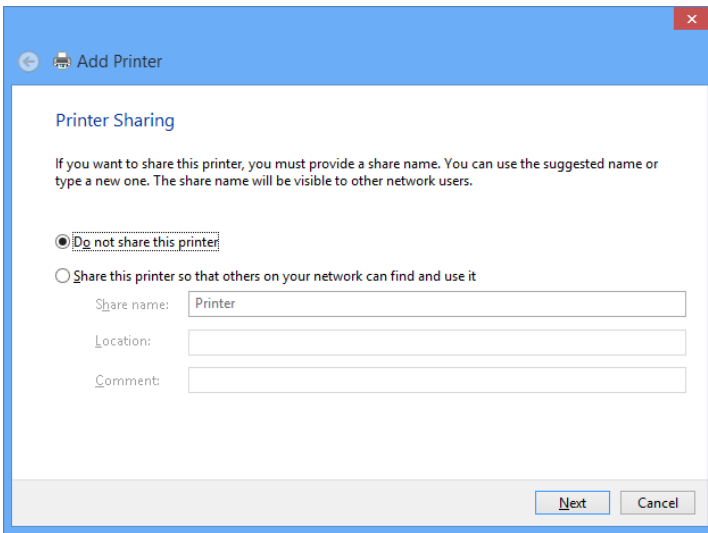
20. Click "Install this driver software anyway" to continue



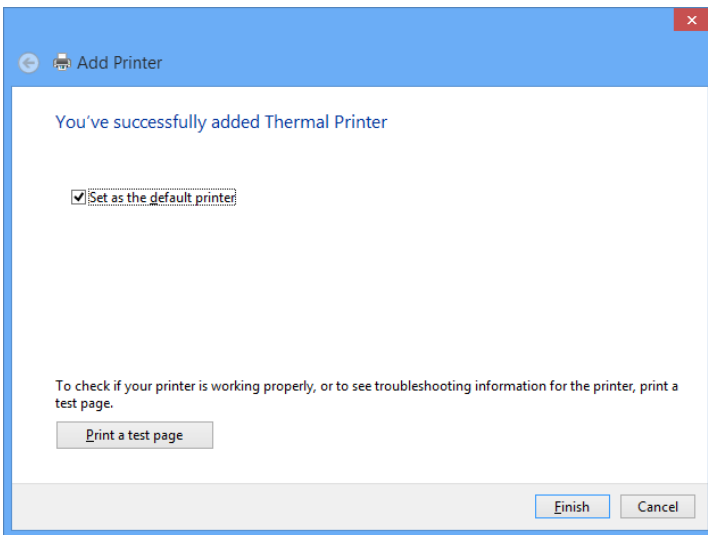
21. Installing printer driver



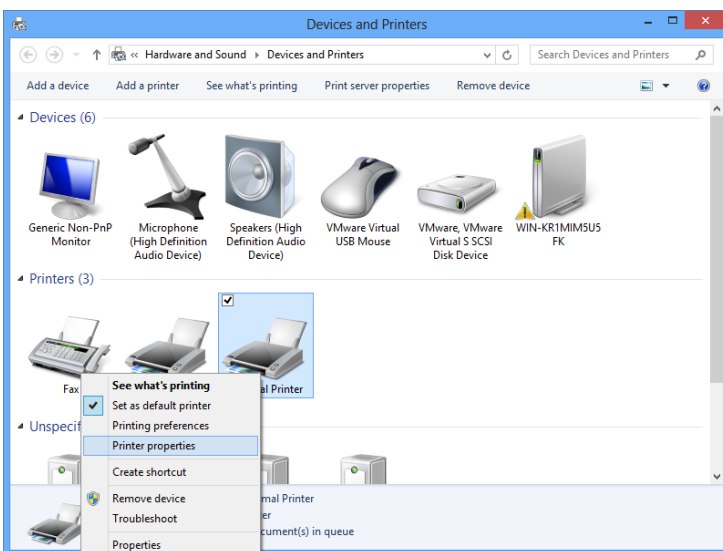
22. Configure the Printer Sharing and click Next to continue



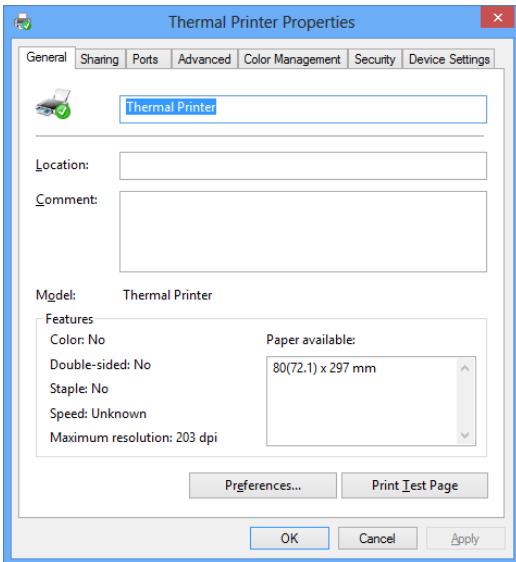
23. The driver is installed successfully



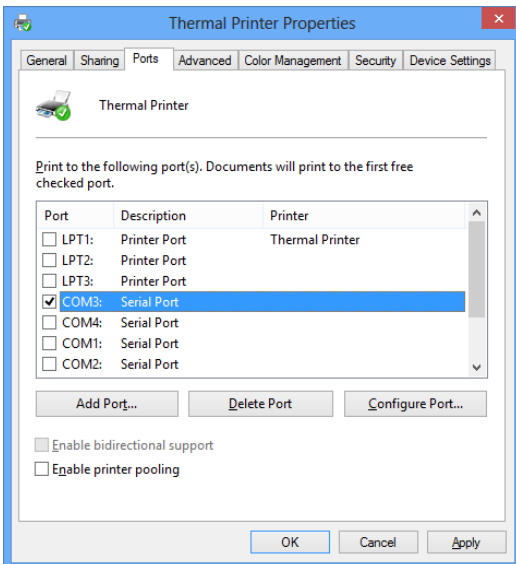
33. In Devices and Printers, right click Printer name, and click "Printer properties"



34. Click Ports



35. Select the correct port in the list and click OK or Apply to save



36. Click Print Test Page to have a printer test

